

to develop these. He suggested there is scope for more in the way of information for those currently outside the T<sub>E</sub>X community. This might include a descriptive “flyer”; details of typesetting bureaux who accept DVI files; descriptions of style files and more help for the implementor. Workshops on topics such as METAFONT, style files and document design could help current T<sub>E</sub>X users to make best use of the software.

In the end, no firm plans were made at this meeting to form a UK T<sub>E</sub>X users’ group but those present confirmed an interest in doing so. It was agreed that a further meeting would be held in London in February or March, since London is, for many, more accessible than Nottingham and the date would allow Malcolm to report on a TUG committee meeting which he would attend in January.

Finally, my thanks go to all the speakers who agreed, at short notice, to talk at the Nottingham meeting and to my colleagues in the Cripps Computing Centre who helped with the domestic arrangements. Thanks, too, go to the trustees of T<sub>E</sub>Xeter88 for financial support which assisted in providing lunch and refreshments. I hope those who attended found the meeting useful and that it will be the first of many.

## Late-Breaking News

### Production Notes

Barbara Beeton

### Input and input processing

Electronic input for articles in this issue was received by mail and on floppy disk. Four articles were accepted in the form of camera copy (see the section on output), as were several illustrative samples that required special fonts or that could not be prepared on the American Mathematical Society’s typesetter for other reasons.

Authors who had written articles previously for TUGboat typically submitted files that were fully tagged and ready for processing with the TUGboat macros — `tugbot.sty` for PLAIN-based files and `ltugbot.sty` for those using L<sup>A</sup>T<sub>E</sub>X. (When

possible, a copy of the file actually used for production is returned to the author, along with the current version of the macros, if the author has requested them or if there have been changes. This seems to provide authors with incentive to write again for TUGboat.)

Articles in which no, or limited, T<sub>E</sub>X coding was present were tagged according to the `tugbot.sty` conventions. Articles tagged according to the author’s own schemes were modified sufficiently to permit them to be merged with the rest of the stream. Especial care was taken to identify macro definitions that conflicted with ones already defined for TUGboat. In the case of L<sup>A</sup>T<sub>E</sub>X-based articles, it was not necessary to consider interactions with other articles. (`\documentstyle{article}` is the basis for `ltugbot.sty`; no method has yet been devised for processing multiple articles in a stream, so each is processed separately, and physical pasteup is used where required to merge partial pages.) For PLAIN-based articles, the side-effects of an author’s own definitions can usually be kept to a minimum by posting `\begingroup... \endgroup` around the article.

Most submissions for this issue were PLAIN; for convenience in processing, two items submitted in L<sup>A</sup>T<sub>E</sub>X but using no significant L<sup>A</sup>T<sub>E</sub>X features were converted to PLAIN. For these items, test runs of T<sub>E</sub>X separately and in groups were used to determine the arrangement and page numbers (to satisfy any possible cross references). The final processing of these articles was in three T<sub>E</sub>X runs, with ranges of page numbers skipped where L<sup>A</sup>T<sub>E</sub>X-based items would be inserted; starting page numbers of L<sup>A</sup>T<sub>E</sub>X items were indicated to support cross-referencing. L<sup>A</sup>T<sub>E</sub>X items, as mentioned above, were processed individually, and arranged in the proper order after camera copy was produced.

The following articles were prepared using L<sup>A</sup>T<sub>E</sub>X; all others (except for items received as camera copy, for which see below) used the regular `tugbot.sty`.

- Michael Harrison, *News from the VORTEX project*, page 11.
- Adrian Clark, *An enhanced T<sub>E</sub>X-editor interface for VMS*, page 14.
- Peter Abbott, *UKT<sub>E</sub>X and the Aston archive*, page 59.
- Michael Modest, *Using T<sub>E</sub>X and L<sup>A</sup>T<sub>E</sub>X with WordPerfect 5.0*, page 68.
- Sriram Sankar, *APE — A set of T<sub>E</sub>X macros to format Ada programs*, page 89.

- Frank Mittelbach, Addendum to *A new implementation of the array- and tabular-environments*, page 103.
- Schöpf, Rainer, *Drawing histogram bars inside the L<sup>A</sup>T<sub>E</sub>X picture-environment*, page 105.
- Dezső Nagy, *Vertical centering for transparencies*, page 108.
- C. G. van der Laan, *Typesetting Bridge via L<sup>A</sup>T<sub>E</sub>X*, page 113

### Output

Camera copy for this issue of TUGboat was prepared on the devices indicated, and can be taken as representative of the output produced by those devices. The bulk of this issue was prepared at the American Mathematical Society on a VAX 8700 (VMS) and output on an APS- $\mu$ 5 using resident CM fonts and additional downloadable fonts for special purposes. The items listed below were received as camera copy; they were prepared on the devices indicated. The output devices used to prepare the advertisements were not usually identified; anyone interested in determining the device used for a particular ad should inquire of the advertiser.

- Unidentified:
  - all advertisements.
  - sample page of Japanese T<sub>E</sub>X input, page 10.
- Apple LaserWriter (300 dpi): Michael Harrison, *News from the VORTEX Project*, figure page 13.
- Autologic APS- $\mu$ 5 (1440 dpi): Donald E. Knuth, *Typesetting concrete*, page 31; DEC 10.
- Canon CX (300 dpi): Georgia Tobin, *A handy little font*, page 28.
- Hell Digiset (900 dpi): sample page accompanying *A T<sub>E</sub>X encounter in Japan*, page 9; FACOM (Fujitsu).
- Océ 6750 (20 dots/mm): Marius Broeren and Jan van Knippenberg, *High quality printing of T<sub>E</sub>X-DVI files in the VAX/VMS environment*, page 56; VAX/VMS.
- QMS PS 810 (300 dpi): Kim Kubik, *AmigaT<sub>E</sub>X...*, page 65; Amiga.

## Coming Next Issue

### Printing Vietnamese Characters by Adding Diacritical Marks via T<sub>E</sub>X

Brother Eric Vogel FSC  
Saint Mary's College, Moraga, CA

The technique described uses T<sub>E</sub>X to produce the diacritical marks for the various vowels needed for Vietnamese. The marks used are: accent grave, accent acute, tilde, question mark and dot (below). New vowels will be introduced using the above by placing a hat (above a or e) or breve accent (above a) or by attaching a "beard" (using the breve accent) to o and u. The macros for these diacritics will be given.

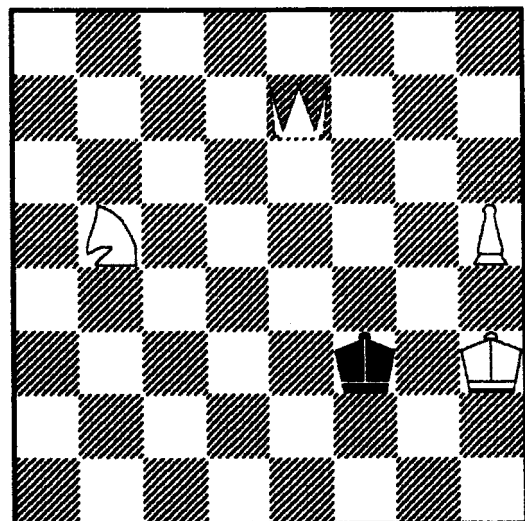
---

### Chess Printing via METAFONT and T<sub>E</sub>X

Zalman Rubenstein

Every chess fan knows the pleasant difference between seeing an interesting chess position or a chess problem printed, and looking at the standard description of the pieces by means of an 8  $\times$  8 coordinate system a1 to h8.

To help bridge this gap we have written a METAFONT-T<sub>E</sub>X program which enables one to print chess positions with ease, and to incorporate these positions with an arbitrary T<sub>E</sub>X output.



**Mate in three. Illustration 2.**  
**My 64K chess computer solved it in twenty seconds.**